

PROJECT:	DATE:
CAT. NO.:	TYPE:
NOTES	VOLTS:

**GENERAL**

Fluorescent lighting strip suitable for T8 lamp application. Designed to accommodate continuous row mounting. Wire guard option available.

**CONSTRUCTION**

Rigid die-formed body constructed from code gauge steel. One-piece endplate / socket bracket is rotated prior to shipping to prevent socket breakage. Joiner for continuous row mounting is incorporated in endplate / socket bracket.

**FINISH**

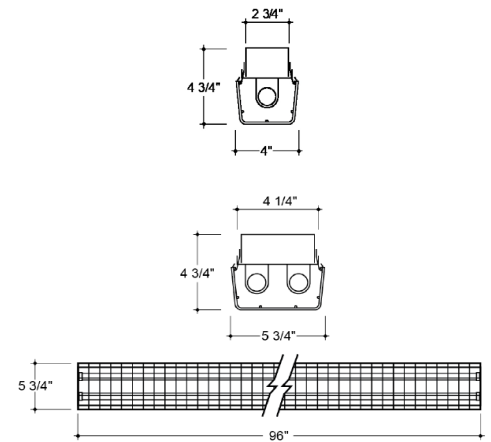
Standard finish is baked white enamel.

**ELECTRICAL**

Instant start electronic ballast, 120V-50/60Hz. Other ballasts and voltages available upon request.

**CERTIFICATIONS**

CSA and/or UL approved.



**Ordering Information**

SERIES	MODULE LENGTH	LAMPS	WATTS	OPTIONS	VOLTAGE	BALLAST / DRIVER
LS	2 = 24" 3 = 36" 4 = 48" 8 = 96"	1 = 1 2 = 2 4 = 4	17 = 17 (T8) 25 = 25 (T8) 32 = 32 (T8)	G = Wireguard	120 = 120 Volts 277 = 277 Volts 347 = 347 Volts	IS = IS PRS = PRS RS = RS